

MLINK ELECTRONIC PATHOLOGY RESULTS DELIVERY

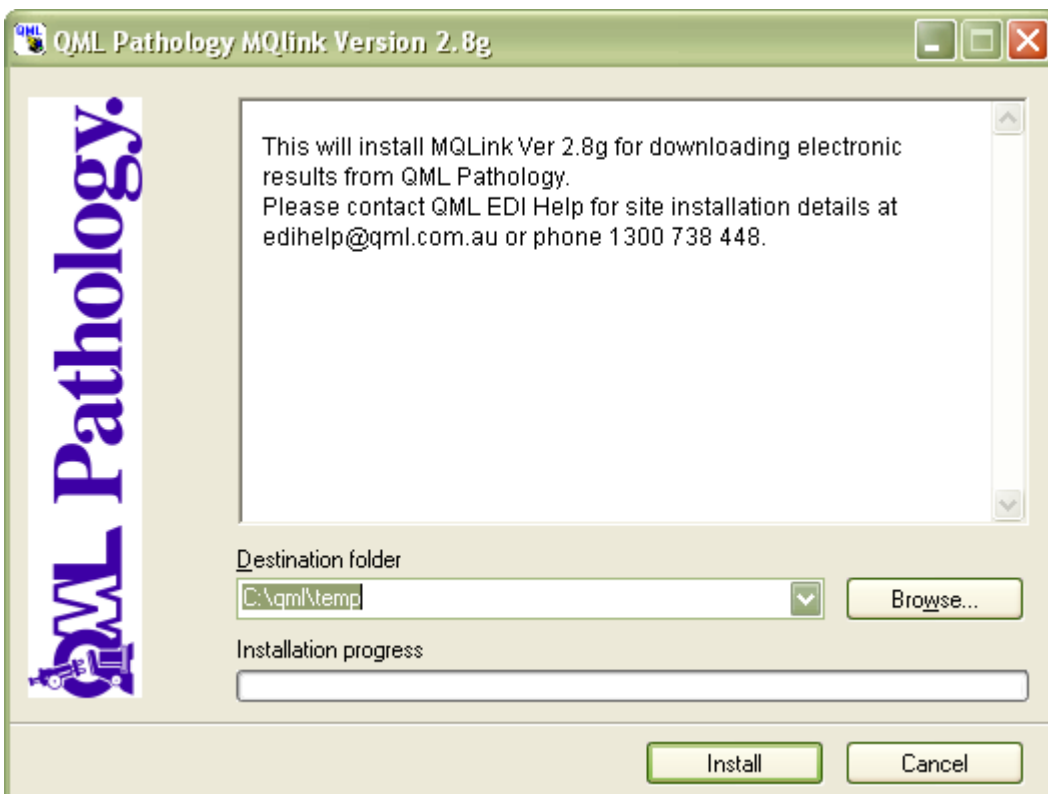
QML Pathology uses the latest in message delivery technology for its Electronic Data Interchange (EDI) purposes. MQLink is a point to point message delivery system utilising IBM WebSphere and TCP/IP internet protocols. MQLink can deliver messages in many data formats and is user configurable for many of its options. Each individual site that receives data is allocated a unique site code and all data is encrypted before transfer and decrypted once delivered to the site computer ensuring data security and integrity.

System Requirements

- Windows NT / XP / 200x Operating System
(Please contact QML EDI Support if running Windows Terminal Server).
- Minimum 20 Mbyte disk space
- Pentium III processor
- Existing internet connection (MQLink will not initiate an internet connection)
- Existing clinical software (MQLink can deliver PIT or HL7 data for import) (* Only required for processing of results, not delivery).

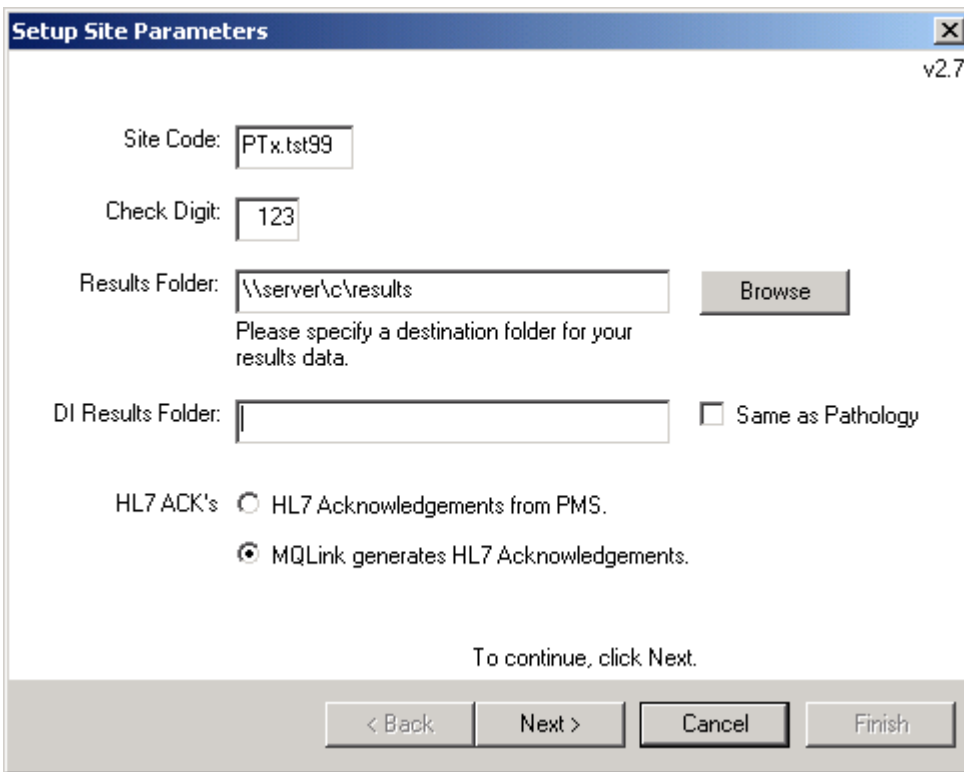
Installing MQLink

1. Ensure you are logged in as Administrator, or, at least have Administrator rights.
2. If not already done, Download the MQ28g.exe file from www.qmlpath.co.nr and save to your hard drive.
3. Double click the mq28g.exe file.

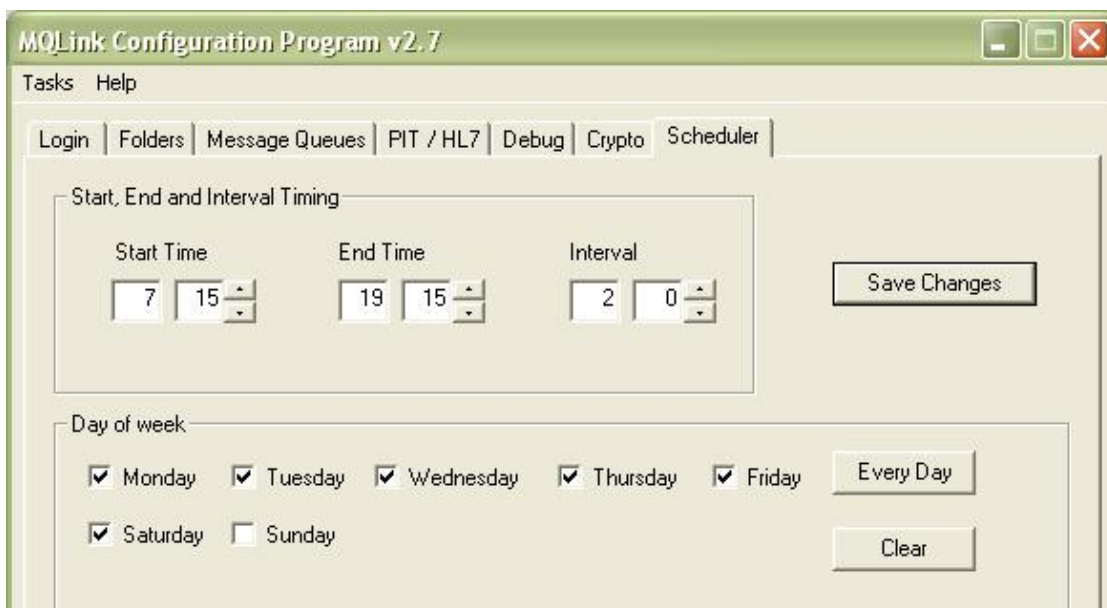


4. Click Install. The installation will unzip and commence. Once the extraction is complete the MQLink installer will request your site specific information.

5. Enter your **site code** and **check digit**.
(If you do not already have this information phone 1300 738 448 for details).
6. In the Results Folder, enter the required destination of the transferred file.
(Mapped drives and/or UNC pathnames are acceptable).

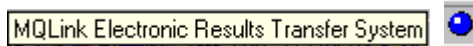


7. If your site will be receiving Diagnostic Imaging results as well as Pathology, enter the required destination in the DI Results Folder.
(“Same as Pathology” tickbox will duplicate the Results Folder information).
8. Leave the HL7 ACKS’s setting as is unless directed by QML EDI staff.
9. Click Next.
10. When the install has completed, click Finish.
11. The MQ Configuration screen will appear. Click the Scheduler Tab to set MQLink to run automatically at set times during the day. Schedule uses a 24 hour clock format.
(The Scheduler can also be accessed from the System Tray icon as below)



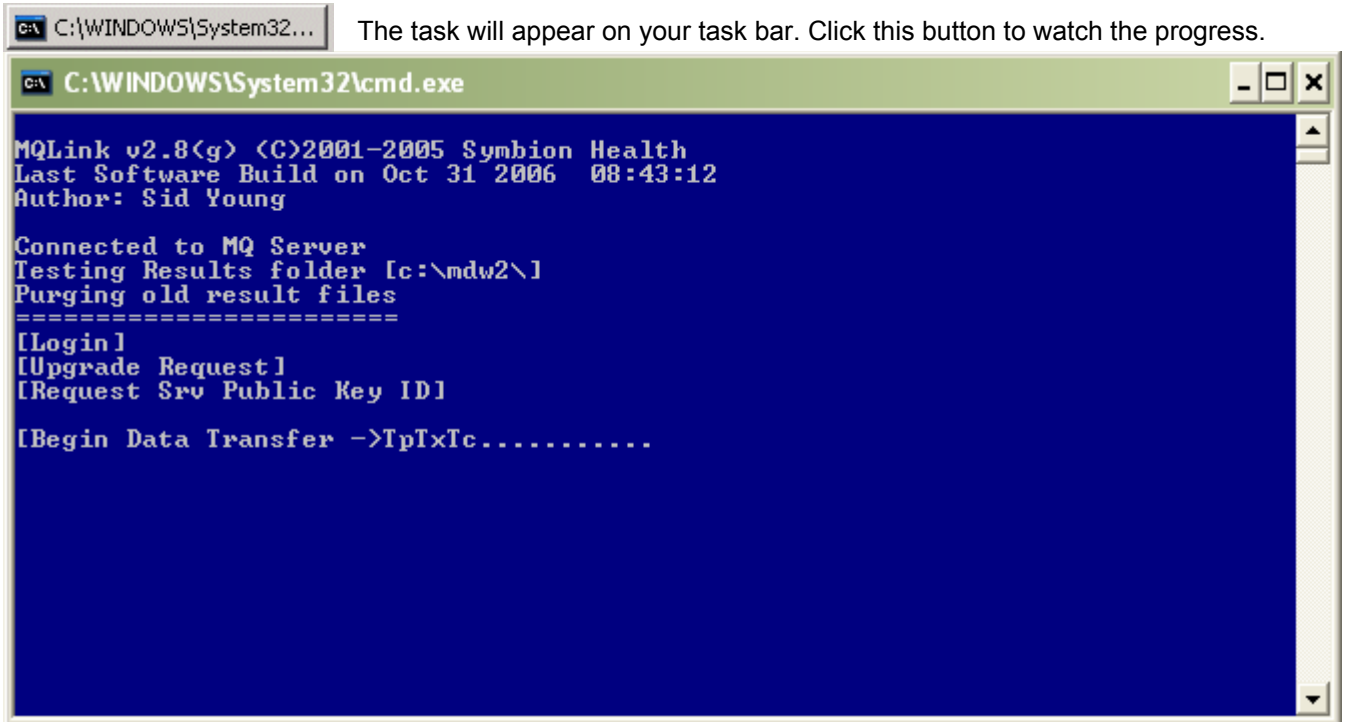
(MQLink is a single installation system. DO NOT INSTALL ON MULTIPLE COMPUTERS!)

The MQLink Pathology Results Transfer System Icon will appear in the system tray. (Bottom right hand corner of your screen next to the system clock). If System Tray icon does not appear, it can be started by going to Start>Programs>Startup>MQLinkStartup.



1. Right click on this icon then left click on Collect Pathology Results to commence the download.

(Note! The first run of MQLink will generate a site-specific encryption key and upload it to our servers. You will not receive any results during this initial run).



When complete, the window will close.

2. MQLink can be run interactively from the desktop. An icon is created during installation to allow you to run MQLink at any time.



3. The Download installation is complete and will now run automatically.
4. MQLink is also installed as a Windows Service using MQScheduler and will run as a background application if no user is logged on to the downloading computer.

Contact QML EDI staff on 1300 738 448 to arrange for release of data or for technical assistance.