

Recent studies have shown that the BD SurePath™ provides the following advantages^{1,2,3} over conventional Pap smears, including:

- A cell enrichment preparation process, which reduces obscuring material such as blood or mucus on the slide, providing greater clarity for diagnosis
- Greater cell yield resulting in significantly fewer unsatisfactory cases and reducing the rate of repeat testing
- A collection method that allows the laboratory to perform additional tests using the cell solution if required, providing more effective patient management
- Testing with BD FocalPoint™ GS Computer assisted Imaging System, which with its superior algorithms, shows a significant increase in the detection of high grade abnormalities.

Conventional Slide



Inflammation

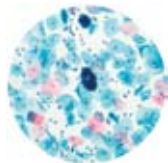


Bloody specimen

BD SurePath™ test



Split sample after cell enrichment



Obscuring material is removed, providing greater clarity for diagnosis

References:

1. Desai M, Role of Automation in Cervical Cytology, *Diagnostic Histopathology* 2009, 15:7, p323-329
2. Freemont-Smith M, Marino J, Griffin B, Spencer L and Bollock D, Comparison of the SurePath™ liquid-based Papanicolaou Smear with the Conventional Papanicolaou Smear in a Multi site Direct-to-Vial Study, *Cancer Cytopathology* 2004, 102:5, p269-279.
3. Kirschner B, Simonsen K and Junge J, Comparison of Conventional Papanicolaou Smear and SurePath™ liquid-based cytology in the Copenhagen population screening programme for cervical cancer, *Cytopathology* 2006, vol 17, p187-194.

For further information, please speak with your doctor



Specialists in Private Pathology since the 1920s

As this brochure contains only general information, professional advice from your medical practitioner should be sought before applying the information in this brochure to particular circumstances. You should not rely on any information contained in this brochure without first obtaining professional advice. Prices are correct at time of printing and are subject to change without notice.



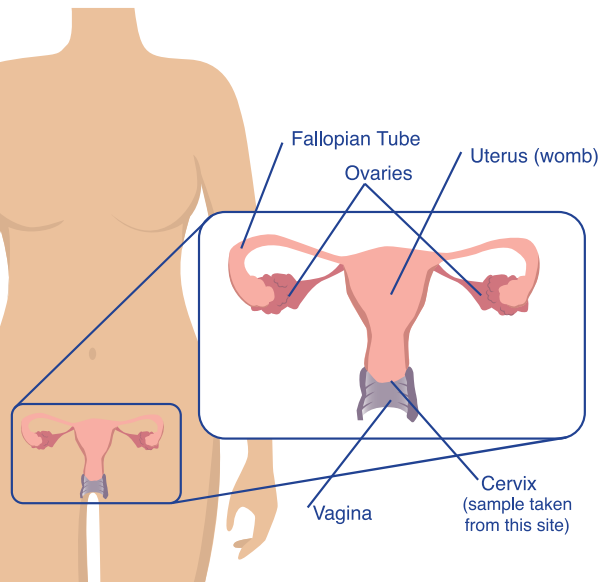
Pap Smear and BD SurePath™ Tests

What is a Pap smear?

A Pap smear is a simple procedure in which cells are removed from the lower end of the womb (cervix) during an internal examination of the vagina. The cells are smeared onto a slide and sent to the laboratory, where trained scientists examine the cells under a microscope.

Why have a Pap smear?

Pap smears are an easy way to detect early changes in the cells of the cervix. Over several years, these changes may develop into a cancer. If these changes are found and treated early, most cancers can be prevented. Having regular Pap smears has been shown to reduce the likelihood of developing cervical cancer. Having regular Pap smears could save your life.



How effective is a Pap smear?

A Pap smear is a screening test and a single test does not always detect all abnormalities. Having regular Pap smears greatly increases the chances of finding early, pre-cancerous changes.

Who needs a Pap smear?

- All women who are or have been sexually active.
- Women after menopause still need a Pap smear.
- Women who have had a hysterectomy for previous disease of the cervix.

What about the results?

The results of your Pap smear will be sent to your doctor. Your doctor will arrange for the result to be given to you directly.

A negative report means that no significant changes were seen in the cells.

A report of low-grade or possible low-grade abnormalities means that minor changes were found. These changes are common and often disappear over a period of time. Another smear or further tests are usually recommended.

A report of high-grade or possible high-grade abnormalities means that there are changes that your doctor will need to investigate further. Referral to a specialist gynaecologist may be necessary.

An unsatisfactory smear occurs when the cells cannot be properly examined, or the sample of the cells is too small. There are a number of reasons why this may happen, and are often out of the control of the practitioner taking the smear or the laboratory examining it. A repeat smear is recommended.



BD SurePath™ Liquid-Based Cytology (LBC)

The BD SurePath™ LBC test is an adjunct to preparing your Pap smear. Your doctor or nurse will collect your smear in exactly the same way as usual. However, instead of throwing the collection instrument away after the smear is made, the device is dropped into a vial with preservative solution. Cells remaining on the device are saved. This vial is sent to the laboratory along with your conventional Pap smear slide where any additional cells are processed to prepare another slide for examination. A computerised scanning device is used to scan the slide and identify important cellular changes requiring examination by the medical laboratory scientist.

continued >

Remember:

Regular Pap smears are the best way to identify changes that warn of cancer, regardless of the method used.